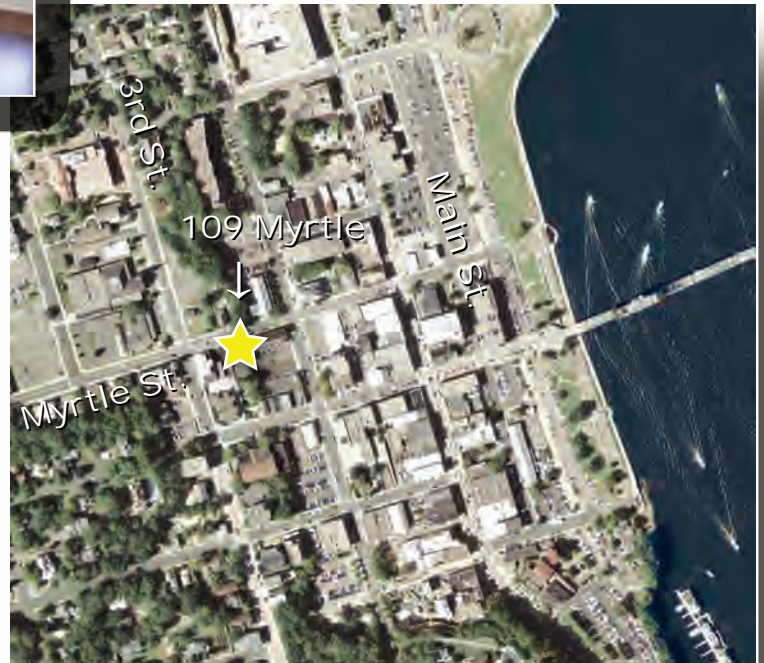
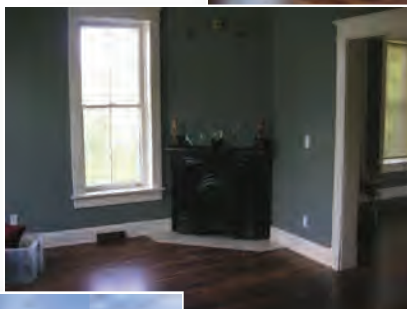
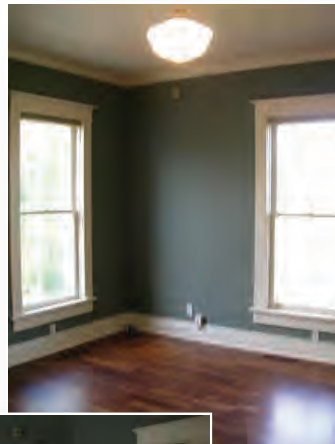




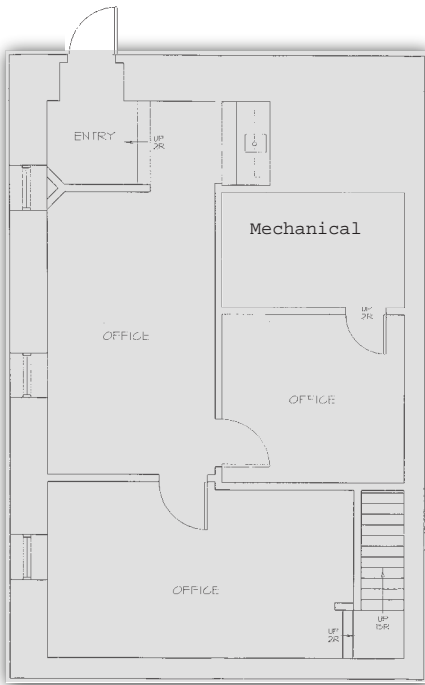
Great Downtown Location

- Fully Restored 1880's Building
- River Views
- Private Off Street Parking
- 2 Blocks Off Main Street
- 1,200 Sq Ft of Office Space
 - 3 private offices
 - Open Reception and Conference Room
 - Private Patio and Restroom
- On Site Ownership/Management
- Walk to Public Library, Bank, Numerous Restaurants and Shops
- Offered For Sale or Lease
 - For Lease: \$1,570 per month
 - For Sale: \$400,000

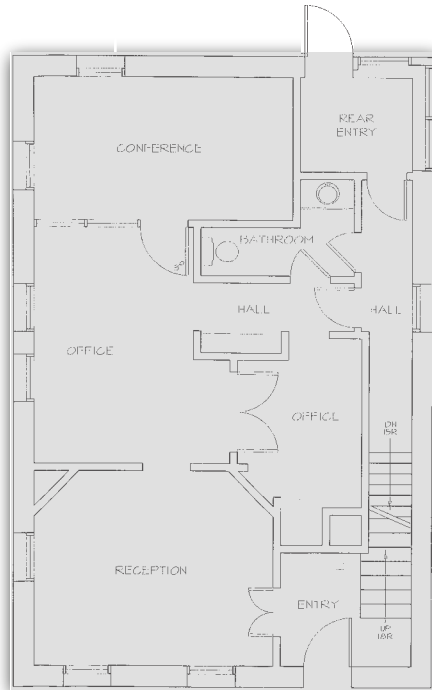
The Historic "Victorian" Building



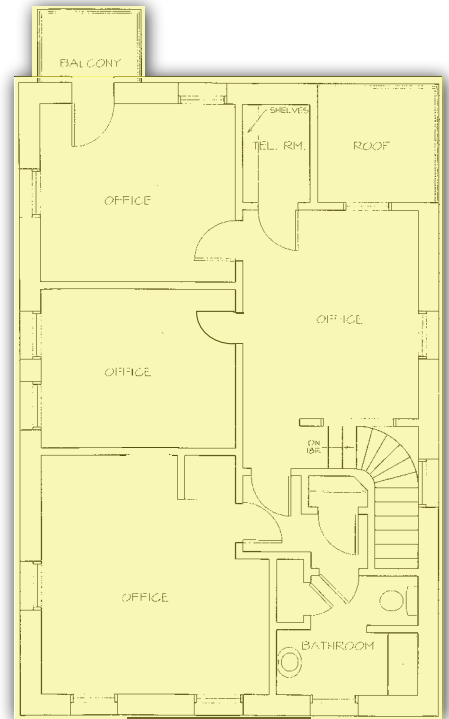
109 Myrtle - Stillwater



Lower Level
Total - 900 sq ft
Fully Leased



Main Level
Total - 1,000 sq ft
Fully Leased



Upper Level
Total - 1,200 sq ft
Available - 1,200 sq ft